



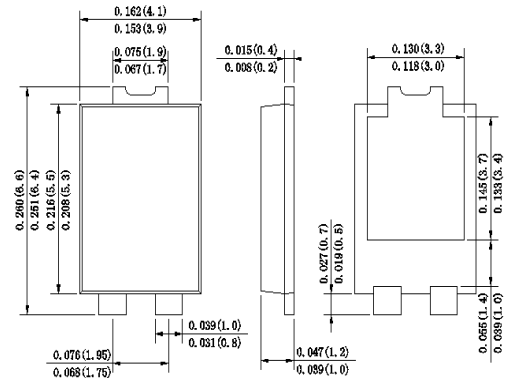
Features

- Planar MOS Schottky barrier diodes
- Low forward voltage drop
- low profile - typical body height 1.1 mm
- Moisture sensitivity: level 1, per J-STD-020
- High temperature soldering guaranteed: 260 °C 10 seconds
- RoHS Compliant
- Halogen-free according to IEC 6124 -2-21 definition

2



Mechanical Data



Dimensions in inches and (millimeters)

- Case : JEDEC TO-277 Molded plastic body
- Case Material: Molding compound meets UL 4V-0 flammability rating
- Terminals :Plated Leads Solderable per MIL-STD-202, Method 208
- Polarity : Polarity symbol marking on body
- Mounting Position : Any
- Weight : 0.003 ounce, 0.0 2 grams

Maximum Ratings And Electrical Characteristics

Ratings at 25 °C ambient temperature unless otherwise specified.

Single phase half-wave 60Hz, resistive or inductive load, for capacitive load current derate by 20%.

Parameter	SYMBOL	S / MDD S /	UNIT
Marking Code			
Maximum repetitive peak reverse voltage	V _{RRM}		V
Maximum DC blocking voltage	V _{DC}		V
RMS Reverse voltage	V _{RMS}		V
Average Rectified Output Current	I _O		A
Non-Repetitive Peak Forward Surge 8.3ms Single Half Sine-Wave Superimposed on rated load (JEDEC Method)	I _{FSM}		A
7 \ S L F D O - X Q F W L R Q	& D - S	D F L W D Q F H Q R W H	S)

Electrical Characteristics Ta=25 °C unless otherwise noted

Parameter	Test Conditions	Symbol	Value		Unit
			Typ	Max	
Forward Voltage Drop at 15A	TA=25B] TA=1 B]	V _F			V
Peak reverse current at rated DC blocking voltage	TA=25B] TA=1 B]	I _R	100	00	uA
					mA
7 \ S W R E U O H P V L Q R W W D H Q F H		R -A	&&		/W
2 S H U D W L Q J M X Q F W L R Q		V W R U D J H W H W P R S H U D W X U H			
6 storage temperature range		T _{STG}	-55 to +150		

Q R W H 0 H D V X U H G D W 0 +] D Q G D S S O L H G U H Y H U V H Y R O W D J H 3 R O \ P L G H 3 & % R] & R S S H U & D W K R G H S D G G L P H Q V L R Q V



Ratings And Characteristic Curves

FIG.1-TYPICAL FORWARD CURRENT DERATING CURVE

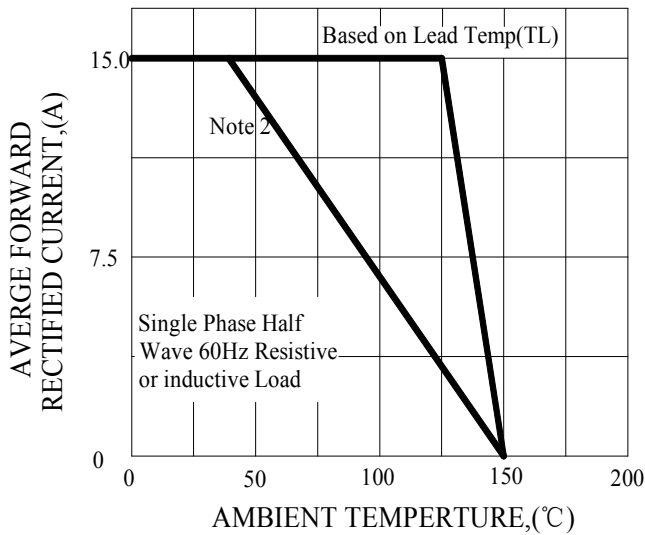


FIG.2-TYPICAL INSTANTANEOUS FORWARD CHARACTERISTICS

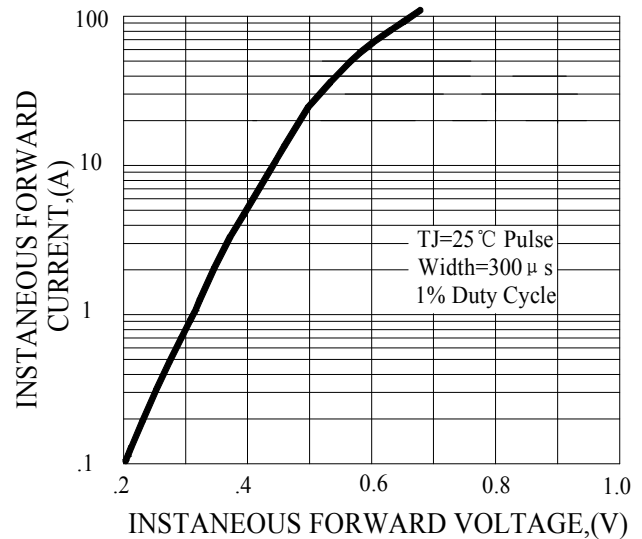


FIG.3-MAXIMUM NON-REPETITIVE FORWARD SURGE CURRENT

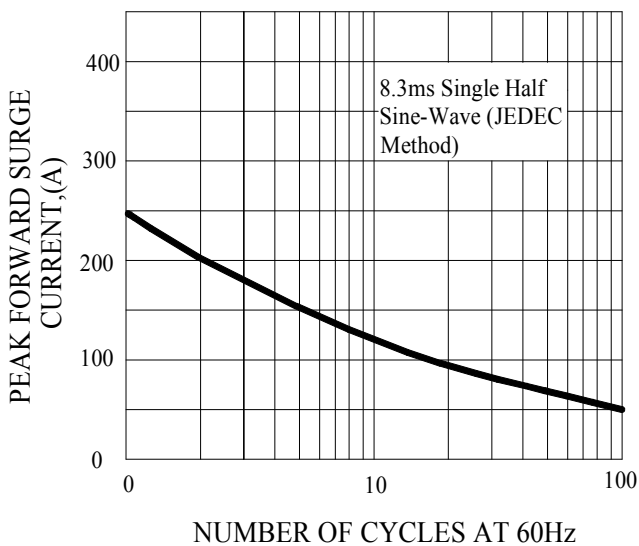
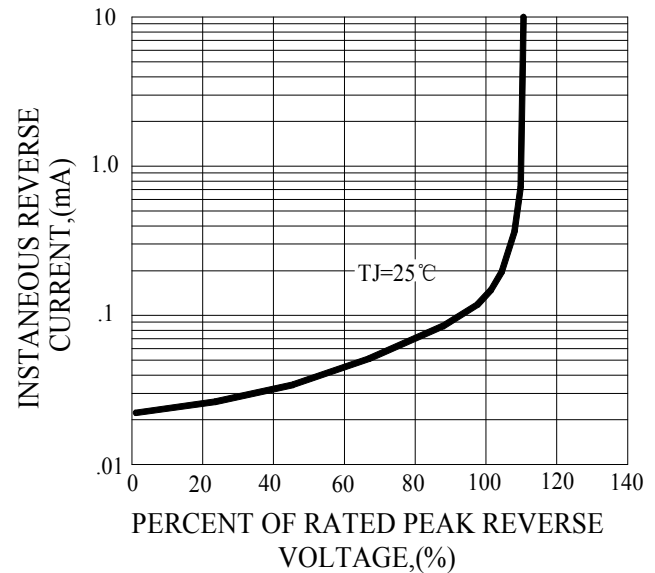
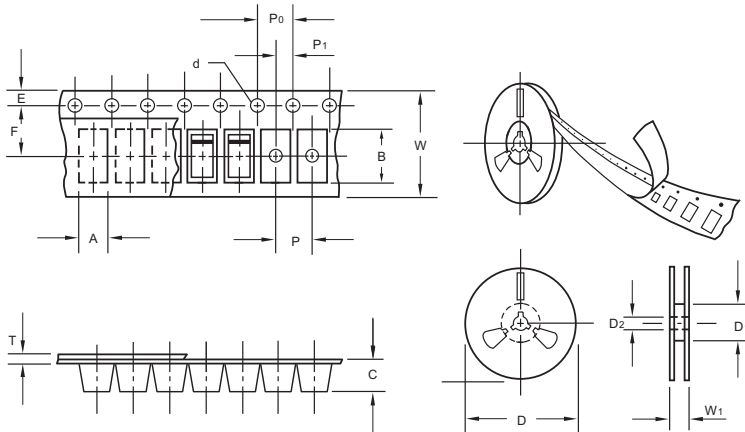


FIG.4-TYPICAL REVERSE CHARACTERISTICS



The curve above is for reference only.

Packing information



unit:mm

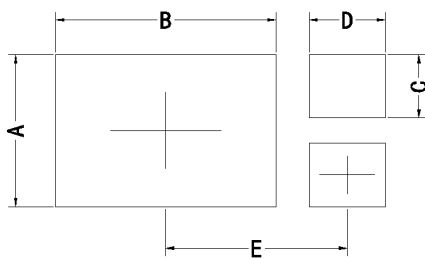
Item	Symbol	Tolerance	TO-277
Carrier width	A	0.1	4.45
Carrier length	B	0.1	7.0
Carrier depth	C	0.1	1.60
Sprocket hole	d	0.05	1.55
13" Reel outside diameter	D	2.0	330.00
13" Reel inner diameter	D1	min	50.0
Feed hole diameter	D2	0.5	13.00
Sprocket hole position	E	0.1	1.75
Punch hole position	F	0.1	7.50
Punch hole pitch	P	0.1	8.00
Sprocket hole pitch	P0	0.1	4.00
Embossment center	P1	0.1	2.00
Overall tape thickness	T	0.1	0.25
Tape width	W	0.3	12.00
Reel width	W1	1.0	12.30

Note: Devices are packed in accordance with EIA standard RS-481-A and specifications listed above.

Reel packing

PACKAGE	REEL SIZE	REEL (pcs)	COMPONENT SPACING (m/m)	BOX (pcs)	INNER BOX (m/m)	REEL DIA, (m/m)	CARTON SIZE (m/m)	CARTON (pcs)	APPROX. GROSS WEIGHT (kg)
TO-277	13"	5,000	4.0	10,000	210*208*203	330	430*430*235	80,000	13.0

Suggested Pad Layout



Symbol	Unit (mm)	Unit (inch)
A	3.60	0.142
B	5.35	0.211
C	1.50	0.059
D	1.85	0.073
E	4.30	0.169