

SCHOTTKY DIODES

Features

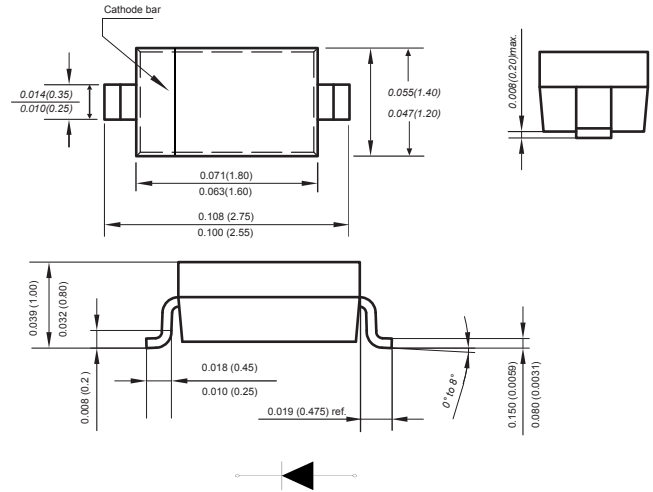
- ◆ Low voltage, low inductance
- ◆ High current rectifier schottky diode
- ◆ with low VF drop For power supply
For detection and step-up-conversion

SOD-323



Mechanical Data

Case: JEDEC SOD-323 molded plastic body
 Terminals: Plated leads solderable per MIL-STD-750, Method 2026
 Polarity: Polarity symbols marked on case
 Weight : 0.0007 ounce, 0.02 grams
 Marking: W5



Dimensions in inches and (millimeters)

Absolute Maximum Ratings at 25 °C

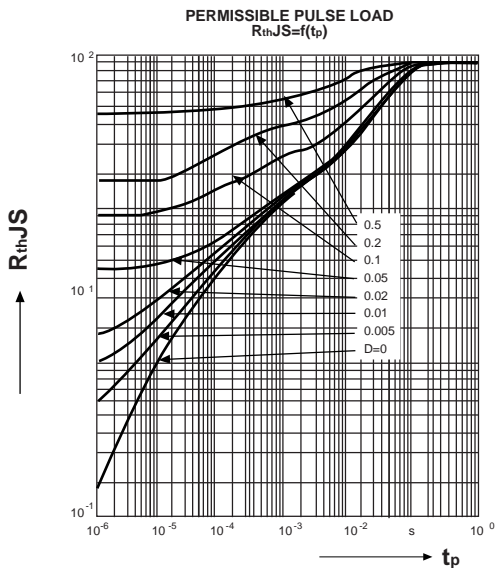
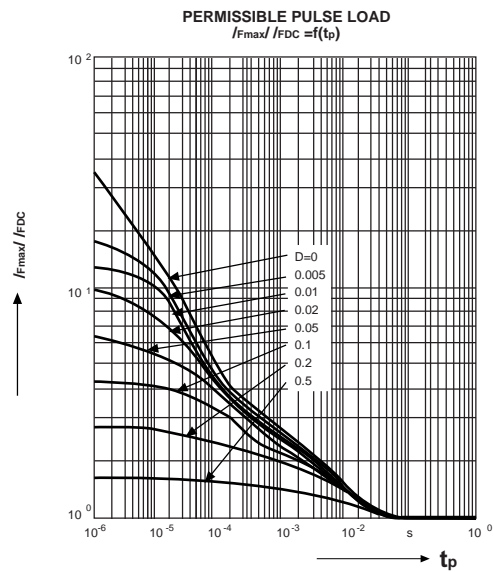
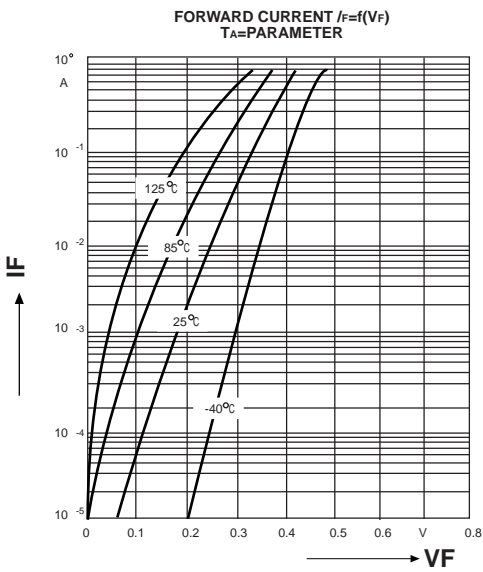
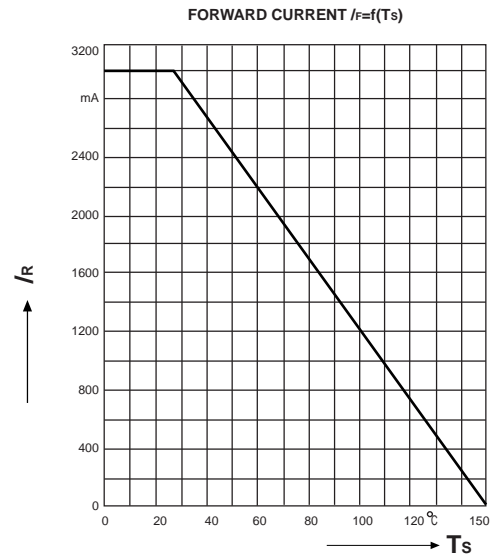
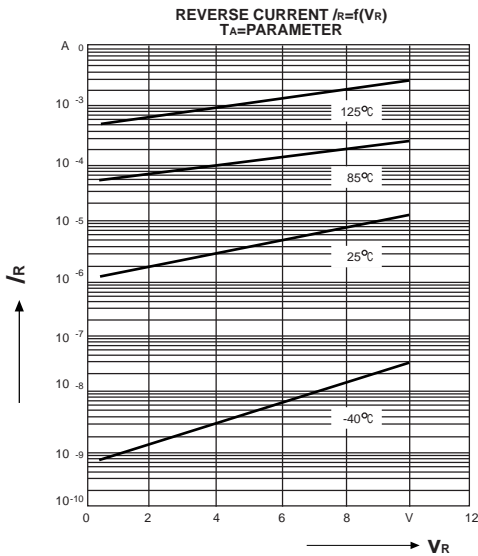
PARAMETER	SYMBOLS	BAT60B	UNITS
DC Blocking voltage	V_R	10	V
Forward current	I_{FM}	3	A
Forward surge current $t_p=10ms$	I_{FSM}	5	A
Power dissipation $T_c=25C$	P_{tot}	250	mW
Junction temperature	T_j	150	°C
Storage temperature	T_{STG}	-65 to +150	°C
Non-Repetitive peak reverse voltage	V_{RM}	10	V

Characteristics at $T_a= 25 °C$

PARAMETER	SYMBOLS	Min.	Typ.	Max.	Unit	Conditions
Forward voltage	V_F			300	mV	$I_F=10mA$
				380		$I_F=100mA$
				500		$I_F=500mA$
				600		$I_F=1000mA$
Reverse current	I_R			15	uA	$V_R=5V$
				25		$V_R=8V$
Capacitance between terminals	C_T			30	pF	$V_R=5V, f=1.0MHz$

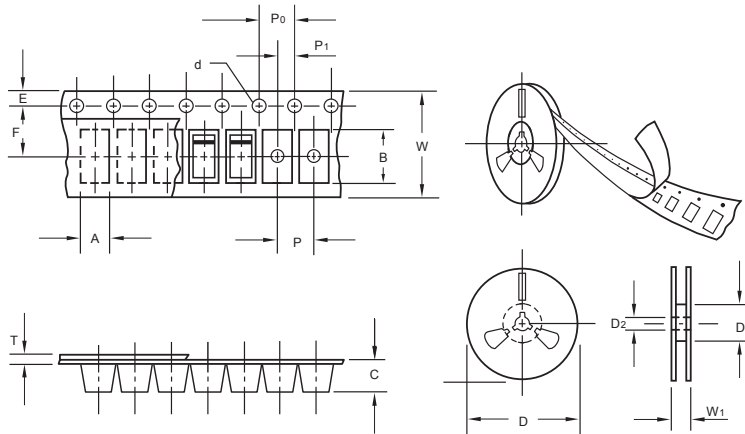


Typical Characteristics



The curve above is for reference only.

Packing information



unit:mm

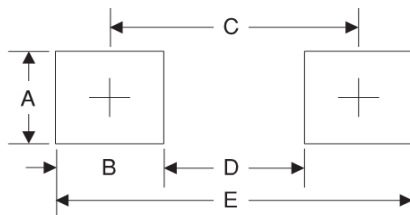
Item	Symbol	Tolerance	SOD-323
Carrier width	A	0.1	2.1
Carrier length	B	0.1	4.0
Carrier depth	C	0.1	1.60
Sprocket hole	d	0.05	1.55
7" Reel outside diameter	D	2.0	178.00
7" Reel inner diameter	D ₁	min	50.0
Feed hole diameter	D ₂	0.5	13.00
Sprocket hole position	E	0.1	1.75
Punch hole position	F	0.1	3.50
Punch hole pitch	P	0.1	4.00
Sprocket hole pitch	P ₀	0.1	4.00
Embossment center	P ₁	0.1	2.00
Overall tape thickness	T	0.1	0.25
Tape width	W	0.3	8.15
Reel width	W ₁	1.0	10.5

Note: Devices are packed in accordance with EIA standard RS-481-A and specifications listed above.

Reel packing

PACKAGE	REEL SIZE	REEL (pcs)	COMPONENT SPACING (m/m)	BOX (pcs)	INNER BOX (m/m)	REEL DIA, (m/m)	CARTON SIZE (m/m)	CARTON (pcs)	APPROX. GROSS WEIGHT (kg)
SOD-323	7"	3,000	4.0	45,000	210*208*203	178	430*430*235	180,000	

Suggested Pad Layout



Symbol	Unit (mm)	Unit (inch)
A	0.7	0.028
B	0.7	0.028
C	2.15	0.085
D	1.8	0.071
E	2.85	0.112